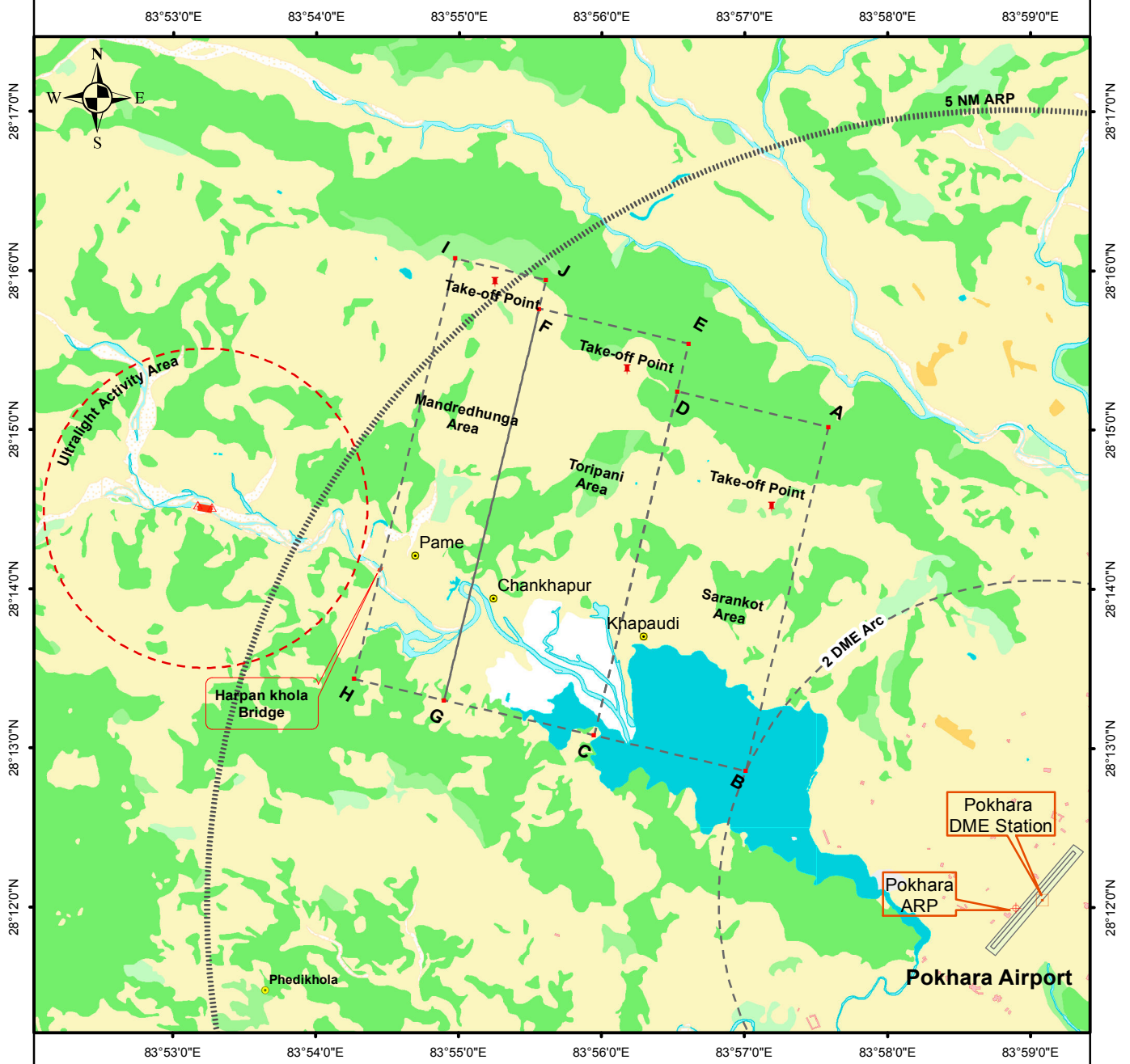


Paragliding Zone - Sarankot, Toripani, Mandredhunga (Pokhara)



Paragliding Area	Take-off Points		Boundary Points	Lateral Limit		Vertical Limit
	Latitude	Longitude		Latitude	Longitude	
Sarankot	28°14'31.5"N	083°57'03.8"E	A	28°15'01.2"N	083°57'35.2"E	
			B	28°12'51.5"N	083°57'00.5"E	7000 ft AMSL
			C	28°13'04.9"N	083°55'56.8"E	GND
			D	28°15'14.6"N	083°56'31.7"E	
Toripani	28°15'23.2"N	083°56'03.2"E	C	28°13'04.9"N	083°55'56.8"E	
			E	28°15'32.6"N	083°56'36.5"E	7000 ft AMSL
			F	28°15'45.7"N	083°55'33.7"E	GND
Mandredhunga	28°15'56.4"N	083°55'07.7"E	G	28°13'18.1"N	083°54'53.8"E	
			H	28°13'26.1"N	083°54'16.0"E	6000 ft AMSL
			I	28°16'04.6"N	083°54'58.5"E	GND
			J	28°15'56.6"N	083°55'36.5"E	
<p>Note:</p> <ol style="list-style-type: none"> 1. Time of Operation from 10:30 - 15:30 LT 2. All the paragliders must remain East of Harpan khola bridge near Pame. 3. All the paragliders must remain North of Fewa-Lake at all the time. 						

Scale - 1:70,000