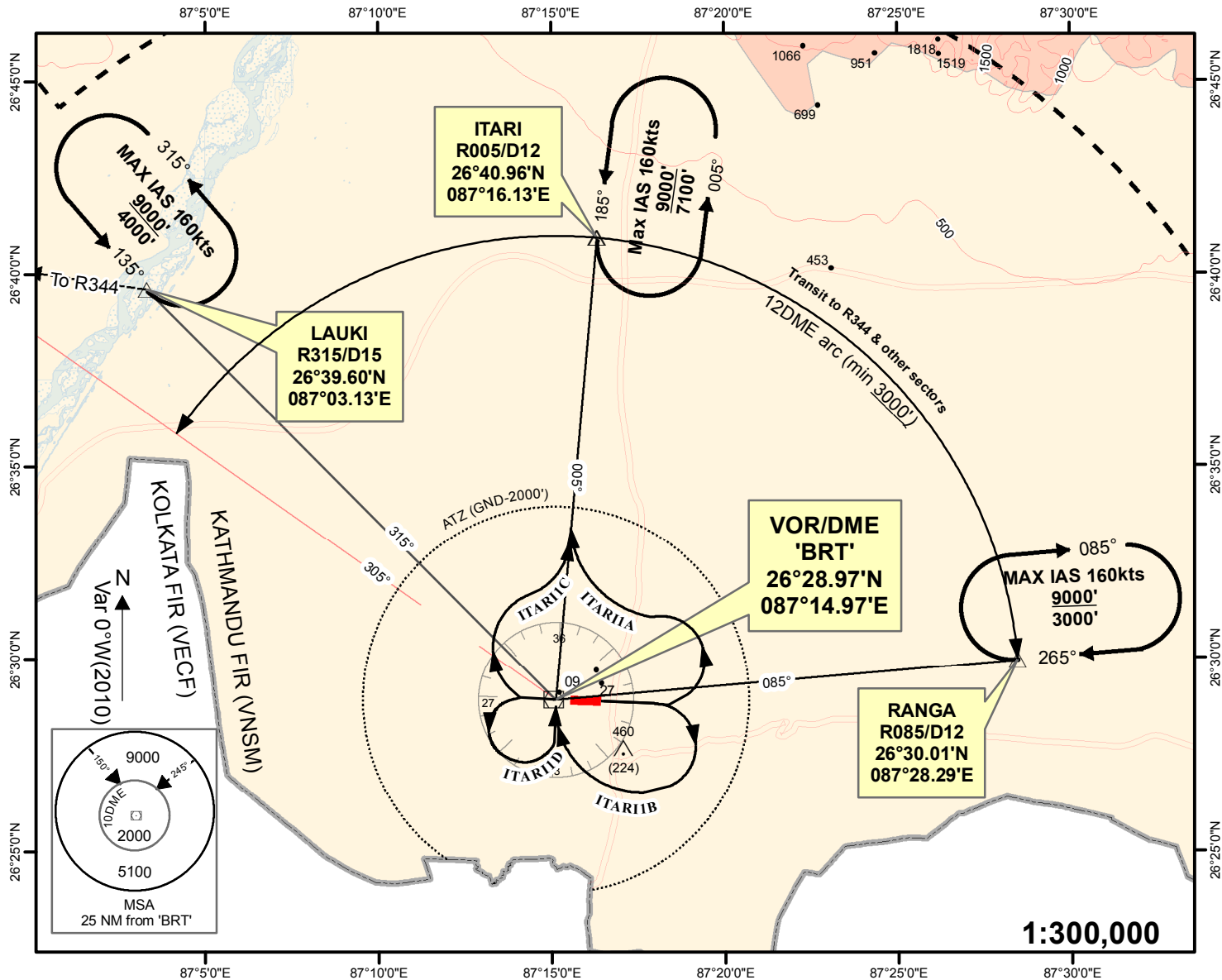


<p><b>STANDARD INSTRUMENT DEPARTURE (SID) - ICAO</b></p>	<p><b>AERODROME ELEV 236'</b> <b>TRANS LEVEL: FL150</b> <b>TRANS ALT: 13500 ft.</b> <b>TWR 123.8</b></p>	<p><b>BIRATNAGAR, NEPAL</b> <b>Biratnagar Airport</b> <b>ITARI 1A, ITARI 1B,</b> <b>ITARI 1C, ITARI 1D</b> <b>'BRT' VOR 114.1</b></p>
--	--	---



Minimum visibility required - 1600 m

<p><b>RWY 27</b></p>	<p><b>ITARI 1C PDG = 9% Max IAS 180Kts</b> CLIMB STRAIGHT AHEAD. AT 1DME, TURN RIGHT TO INTERCEPT R005 TO 'ITARI' (R005/D12). REACH ITARI AT OR ABOVE 7100'</p> <p><b>ITARI 1D PDG = 7% Max IAS 180Kts</b> CLIMB STRAIGHT AHEAD. AT 1DME, TURN LEFT (REMAINING WITHIN 4 DME ARC) TO 'BRT'. THEN INTERCEPT R005 TO 'ITARI' (R005/D12). REACH ITARI AT OR ABOVE 7100'</p>
<p><b>RWY 09</b></p>	<p><b>ITARI 1A PDG = 9% Max IAS 180Kts</b> CLIMB STRAIGHT AHEAD. AT 2.5DME, TURN LEFT TO INTERCEPT R005 TO 'ITARI' (R005/D12). REACH ITARI AT OR ABOVE 7100'</p> <p><b>ITARI 1B PDG = 7% Max IAS 180Kts</b> CLIMB STRAIGHT AHEAD. AT 2.5DME, TURN RIGHT (REMAINING WITHIN 4 DME ARC) TO 'BRT'. THEN INTERCEPT R005 TO 'ITARI' (R005/D12). REACH ITARI AT OR ABOVE 7100'</p>