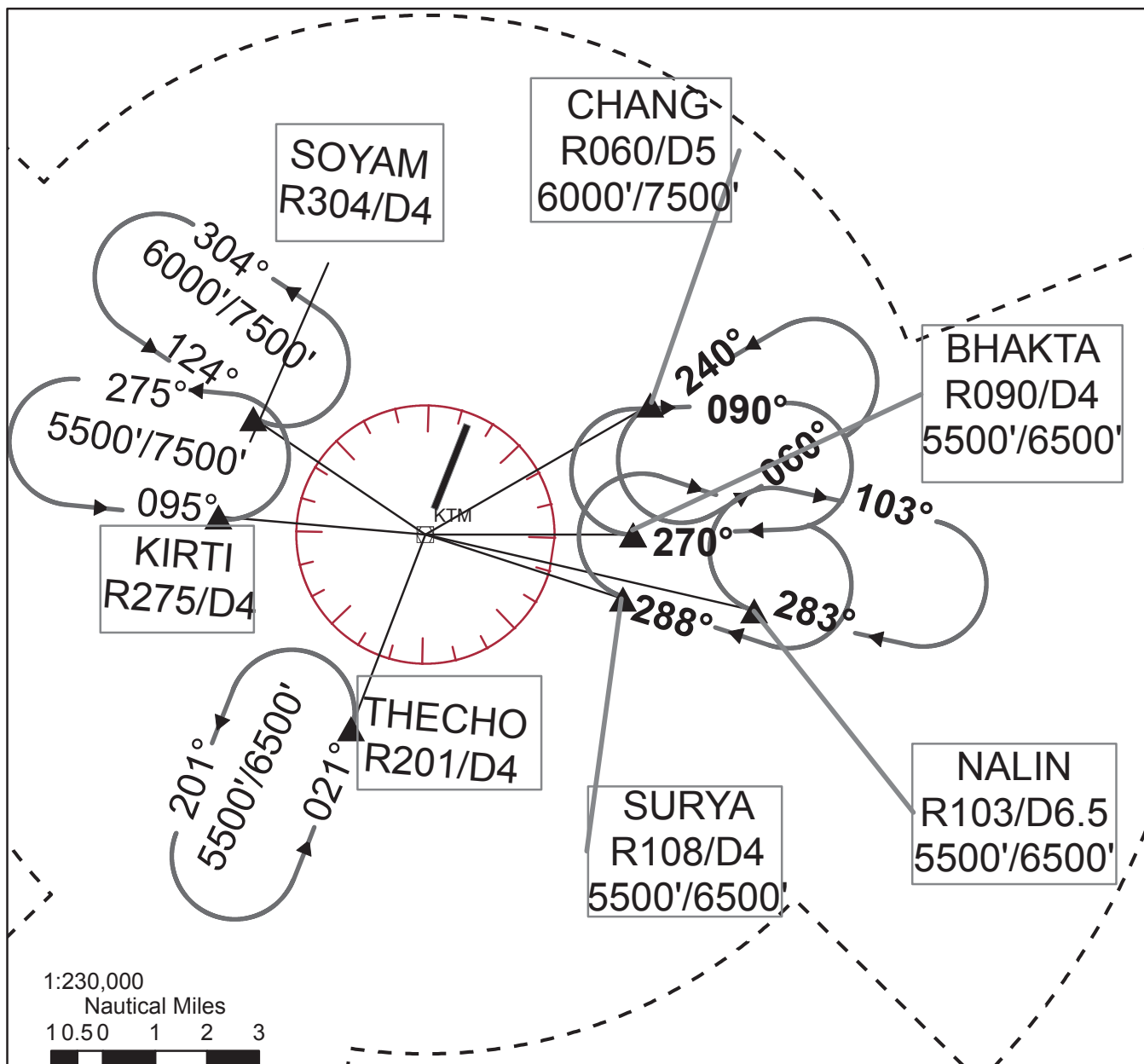


VFR HOLDING POINTS FOR TIA (INSIDE VALLEY)



HOLDING DETAILS

NAME	LOCATION	Inbound Track	Visual Reference	Remarks
KIRTI	'KTM' (R275/D4)	095°	Kirtipur City	Remain north of R258 and outside 2.5D arc
SOYAM	'KTM' (R304/D4)	124°	Swoyambhu Stupa	Remain south of R332 and outside 2.5D arc
THECHO	'KTM' (R201/D4)	021°	Locator 'LTH'	
NALIN	'KTM' (R103/D6.5)	283°	Locator 'LNC'	
BHAKTA	'KTM' (R090/D4)	270°	Bhaktapur City	
CHANG	'KTM' (R060/D5)	240°	Temple	
SURYA	'KTM' (R108/D4)	288°	Temple	

Note:- 1. All holding at these points shall be made in VMC.
2. Terrain clearance shall be a pilot responsibility.