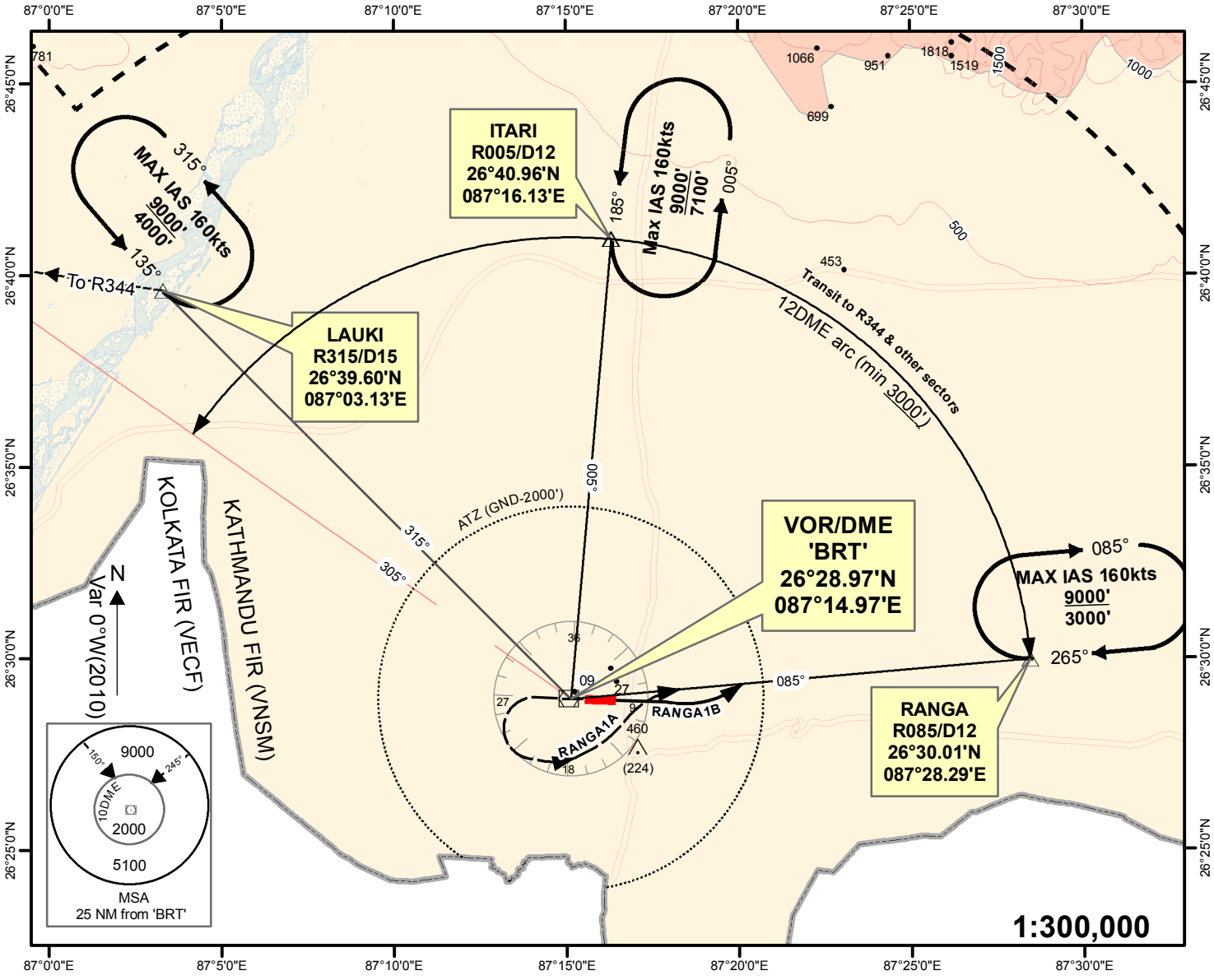


**STANDARD INSTRUMENT
DEPARTURE (SID) - ICAO**

**AERODROME ELEV 236'
TRANS LEVEL: FL150
TRANS ALT: 13500 ft.
TWR 123.8**

**BIRATNAGAR, NEPAL
Biratnagar Airport
RANGA 1A, RANGA 1B
'BRT' VOR 114.1**



Minimum visibility required - 1600 m

<p>RWY 27</p>	<p>RANGA 1A PDG = 5% Max IAS 180Kts CLIMB STRAIGHT AHEAD. AT 1DME, TURN LEFT (REMAINING WITHIN 4D ARC) TO INTERCEPT R085 OUTBOUND TO RANGA(R085/D12). REACH RANGA AT OR ABOVE 3000'</p>
<p>RWY 09</p>	<p>RANGA 1B (PDG 4%) CLIMB STRAIGHT AHEAD TO INTERCEPT R085 TO RANGA (R085/D12). REACH RANGA AT OR ABOVE 3000'</p>