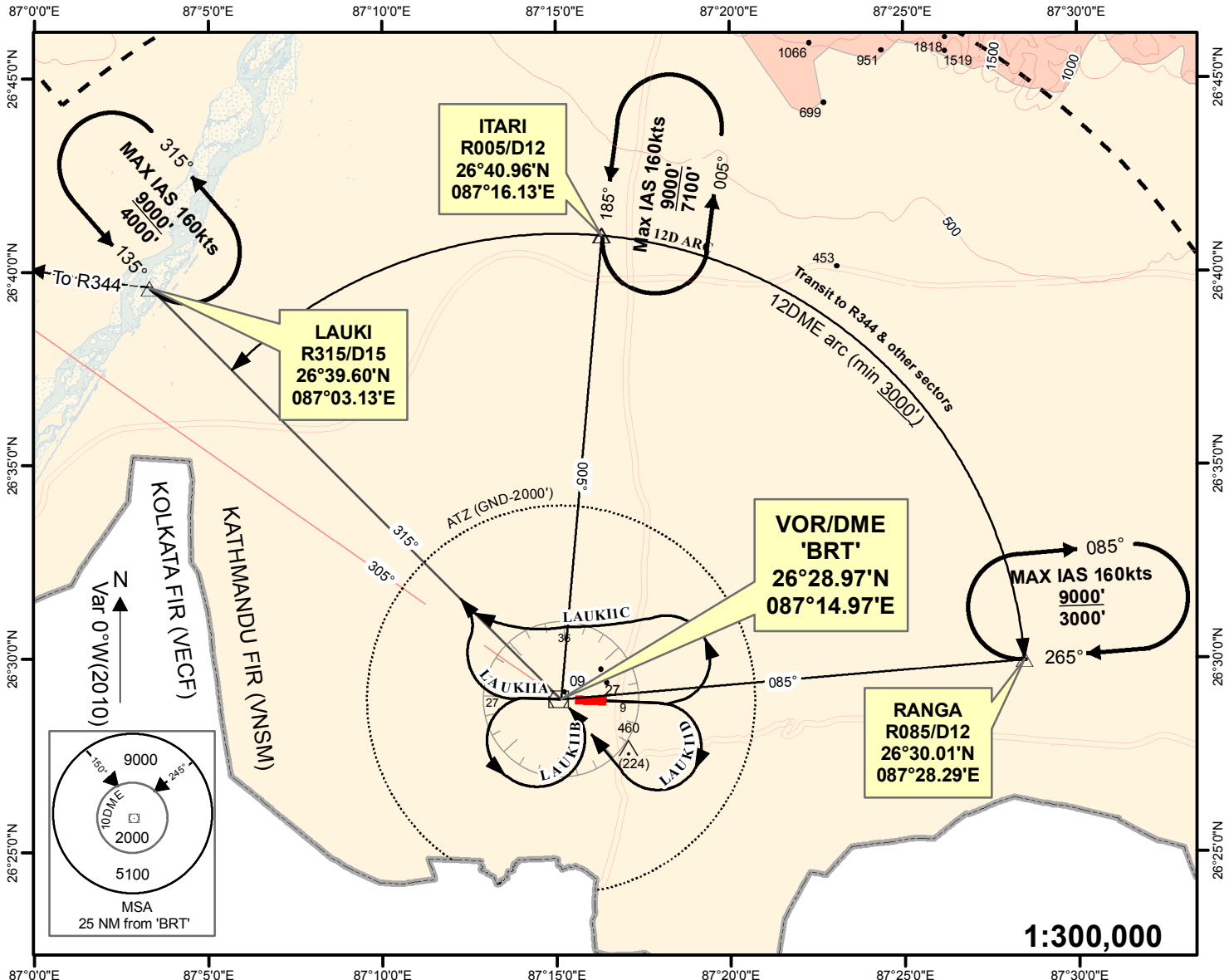


STANDARD INSTRUMENT DEPARTURE (SID) - ICAO	AERODROME ELEV 236' TRANS LEVEL: FL150 TRANS ALT: 13500 ft. TWR 123.8	BIRATNAGAR, NEPAL Biratnagar Airport LAUKI 1A, LAUKI 1B, LAUKI 1C, LAUKI 1D 'BRT' VOR 114.1
---	--	--



Minimum visibility required - 1600 m

RWY 27	<p>LAUKI 1A PDG = 5% Max IAS 180Kts CLIMB STRAIGHT AHEAD. AT 1DME, TURN RIGHT TO INTERCEPT R315 OUTBOUND TO LAUKI (R315/D15) REACH LAUKI AT OR ABOVE 4000'</p> <p>LAUKI 1B PDG = 5% Max IAS 180Kts CLIMB STRAIGHT AHEAD. AT 1DME, TURN LEFT (REMAINING WITHIN 4 DME ARC) TO 'BRT'. FOLLOW OUTBOUND R315 TO LAUKI (R315/D15). REACH LAUKI AT OR ABOVE 4000'</p>
RWY 09	<p>LAUKI 1C PDG = 5% Max IAS 180Kts CLIMB STRAIGHT AHEAD. AT 2.5DME, TURN LEFT TO INTERCEPT R315 OUTBOUND TO LAUKI (R315/D15) REACH LAUKI AT OR ABOVE 4000'</p> <p>LAUKI 1D PDG = 5% Max IAS 180Kts CLIMB STRAIGHT AHEAD. AT 2.5DME, TURN RIGHT (REMAINING WITHIN 4 DME ARC) TO INTERCEPT R135 TO 'BRT'. FOLLOW OUTBOUND R315 TO LAUKI (R315/D15). REACH LAUKI AT OR ABOVE 4000'</p>

Note: At LAUKI climb to 5000 ft then set course to R344 via LAURE at 4% climb gradient till reaching MEA.