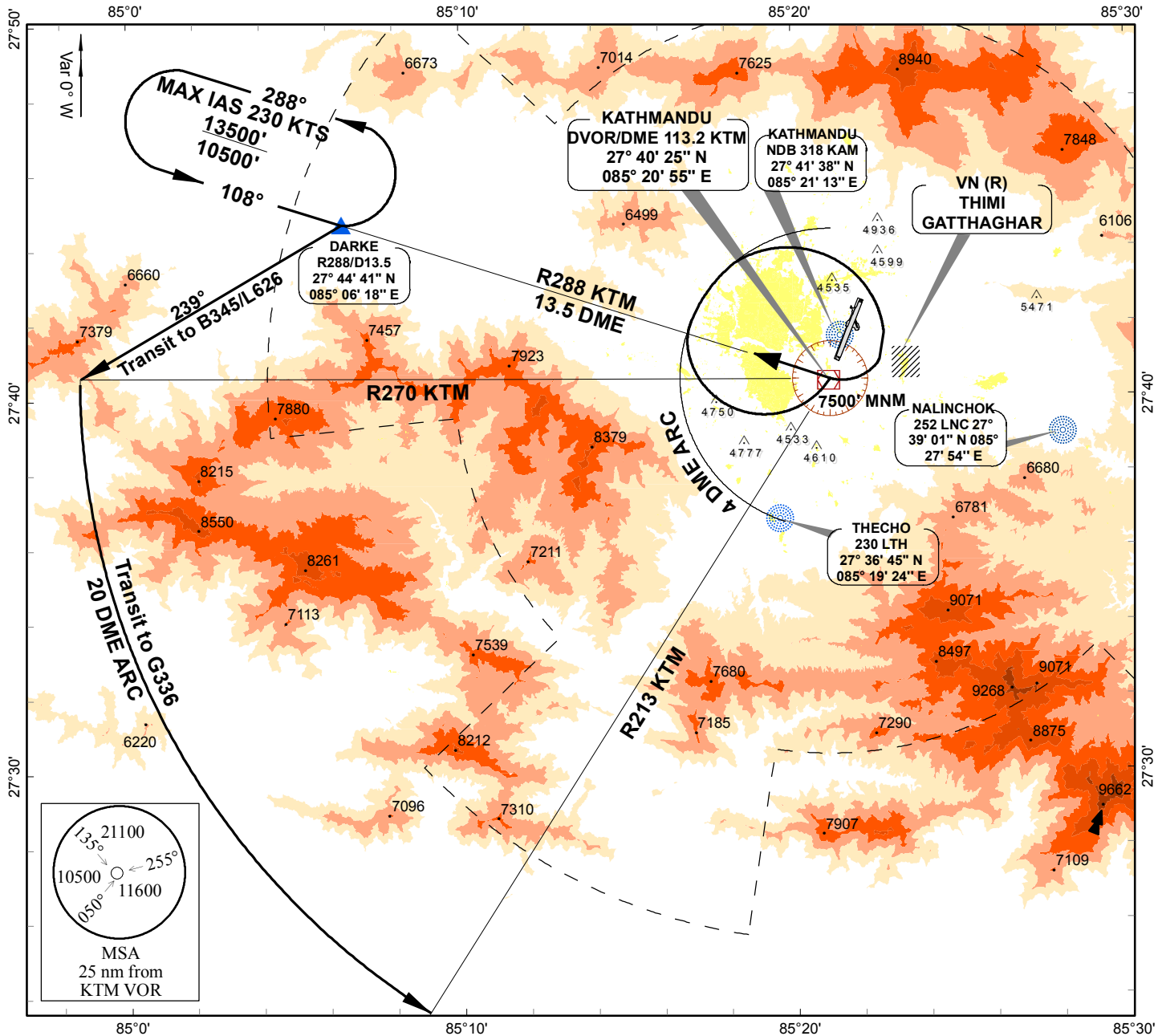


STANDARD DEPARTURE
CHART (SID) - ICAO

AERODROME ELEV 4395'
TRANS LEVEL FL150
TRANS ALT 13500
VAR 0° W (2010)

APP 120.6 MHZ
TWR 118.1 MHZ
GND 121.9 MHZ

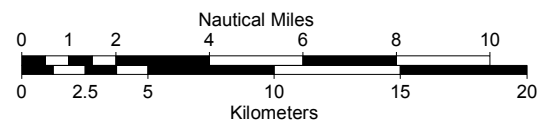
KATHMANDU/NEPAL
Tribhuvan International Airport
RWY 20
DARKE 1B



Coordinates are in WGS-84 system.

Bearings, tracks and radials
are magnetic, height in feet
Distances in nautical miles

Scale 1:300000



SID DARKE 1B RWY20

Departure turn limited to 180 KIAS maximum. Procedure Design Gradient (PDG) 6%.
Climb straight ahead and cross KTM at or above 4700 ft. AT KTM turn right remaining within 4 DME arc. After crossing R040 KTM turn right inbound KTM at or above 7500 ft. and follow outbound R288 KTM to DARKE (R288/D13.5 'KTM') at or above 10500 ft. Continue climb to MEA.