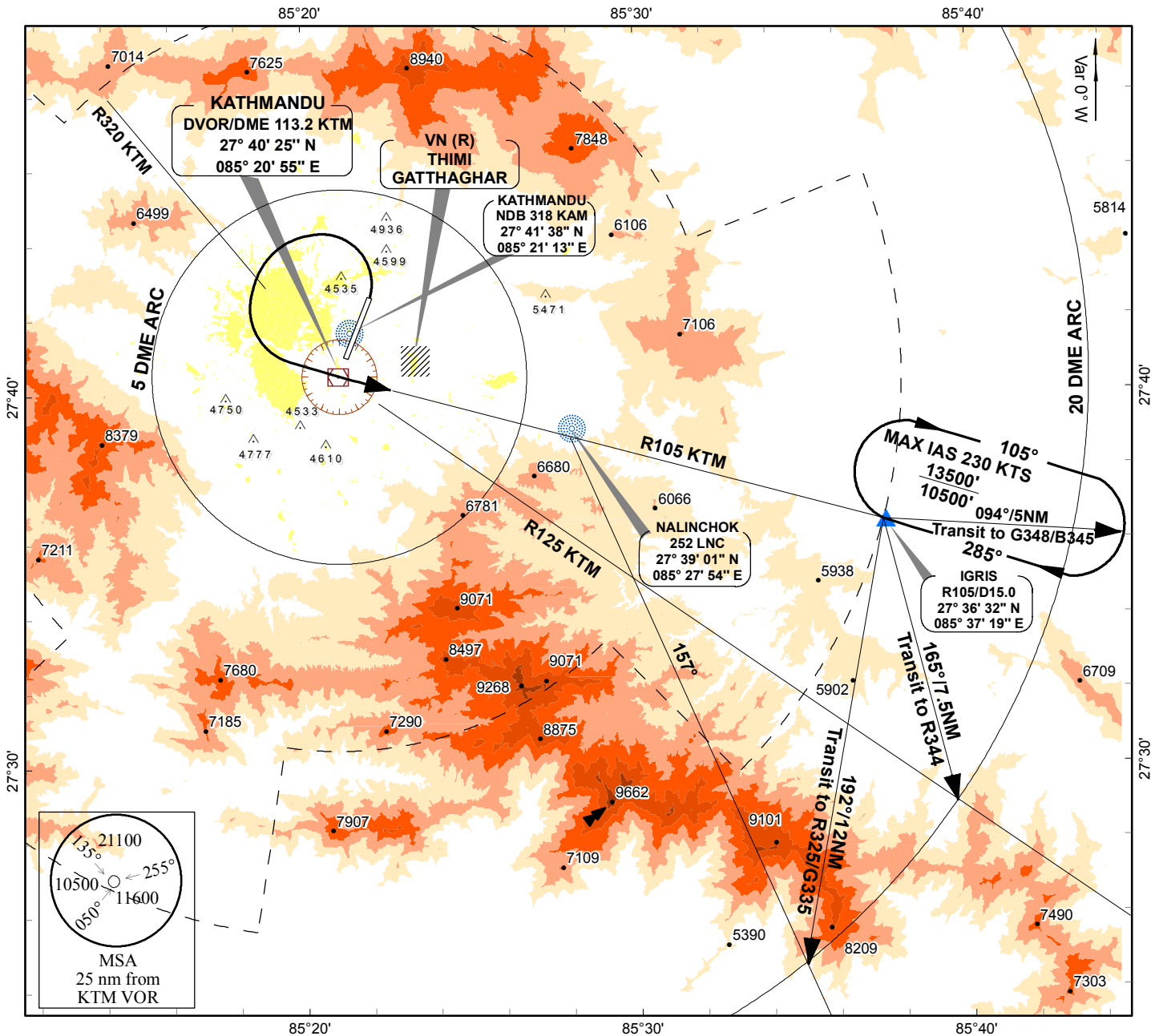


STANDARD DEPARTURE
CHART (SID) - ICAO

AERODROME ELEV 4395'
TRANS LEVEL FL150
TRANS ALT 13500
VAR 0° W (2010)

APP 120.6 MHZ
TWR 118.1 MHZ
GND 121.9 MHZ

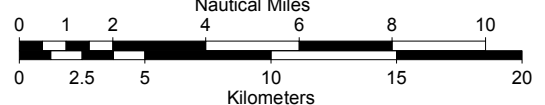
KATHMANDU/NEPAL
Tribhuvan International Airport
RWY 02
IGRIS 1B



Coordinates are in WGS-84 system

Bearings, tracks and radials
are magnetic, height in feet
Distances in nautical miles

Scale 1:300000



SID IGRIS 1B RWY02

Departure turn limited to 180 KIAS . Procedure Design Gradient (PDG) 8%.
Climb straight ahead. At 2.5 DME KTM turn left remaining within 5 DME arc. When crossing R320 turn left to KTM at or above 7500 ft. and follow outbound R105 KTM to IGRIS (R105/15 DME) at or above 10500 ft. Continue climb to MEA.