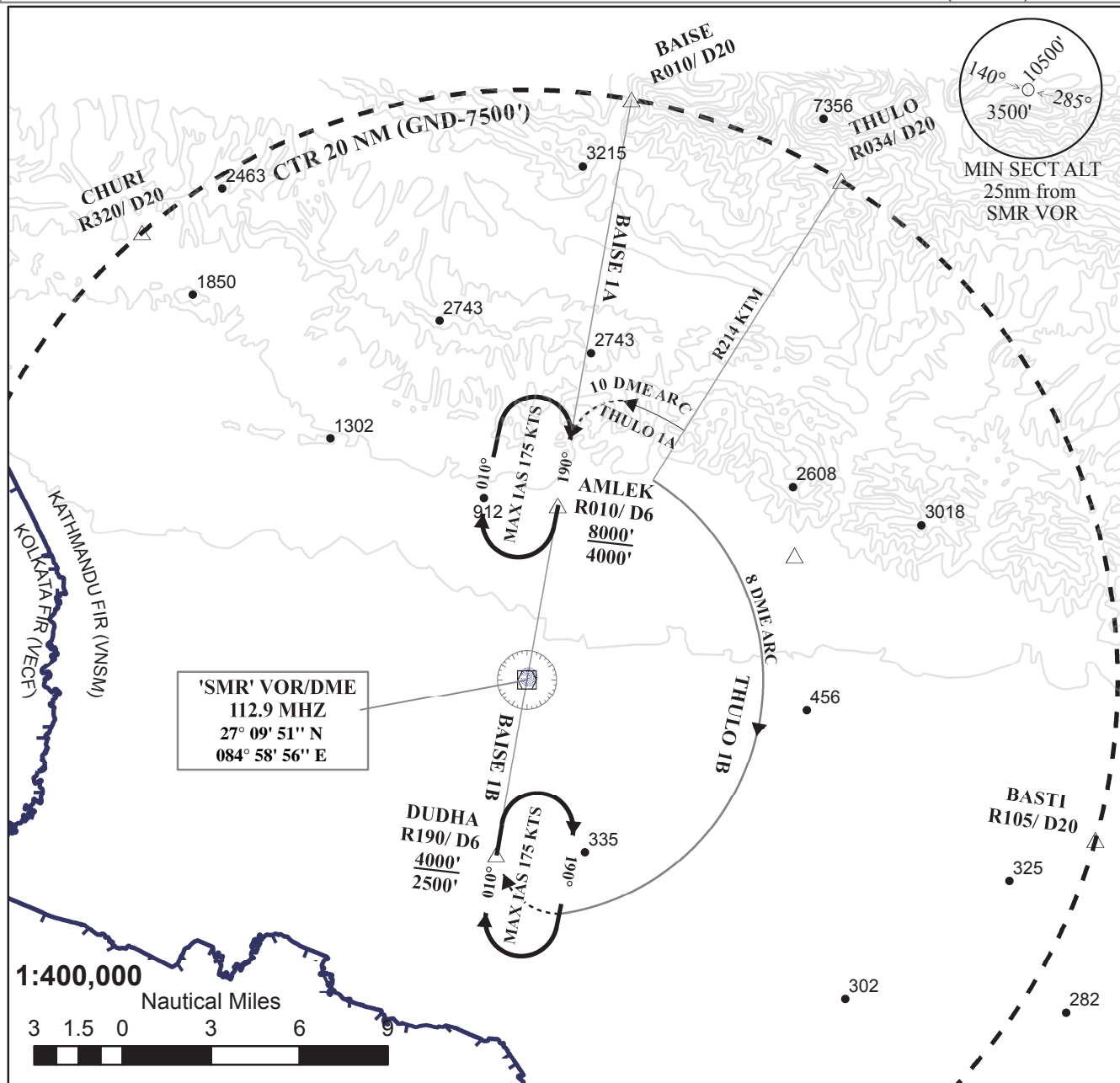


STANDARD TERMINAL ARRIVAL ROUTE (STAR)	AD ELEVATION 445 FT VAR 0° E	TRANS ALT 13500 FT TRANS LEVEL 150 FT TWR 118.3	SIMARA AIRPORT 1. BAISE IA (ARRIVAL) TO RWY 19 2. BAISE IB (ARRIVAL) TO RWY 01 3. THULO IA (ARRIVAL) TO RWY 19 4. THULO IB (ARRIVAL) TO RWY 01
--	---------------------------------	---	--



ALTITUDE

STAR	ROUTING	ALTITUDE
BAISE IA	FROM "BAISE" VIA SMR R 010 TO AMLEK H.P.	CROSS "BAISE" AT OR ABOVE 8500 FT, THEN DESCEND TO 4000 FT OR AS INSTRUCTED BY ATC
BAISE IB	FROM "BAISE" VIA SMR R 010 TO SMR VOR THEN VIA SMR R190 TO DUDHA H.P.	CROSS "BAISE" AT OR ABOVE 8500 FT, THEN DESCEND TO 4000 FT OR AS INSTRUCTED BY ATC
THULO IA	FROM "THULO" VIA SMR R 034 TO D 10.0 THEN VIA 10D ARC TO AMLEK H.P.	CROSS "THULO" AT OR ABOVE 8500 FT. THEN DESCEND TO 4000 FT OR AS INSTRUCTED BY ATC
THULO IB	FROM "THULO" VIA SMR R 034 TO D8.0 THEN VIA D 8.0 ARC TO DUDHA H.P.	CROSS "THULO" AT OR ABOVE 8500 FT. THEN DESCEND TO 4000 FT OR AS INSTRUCTED BY ATC