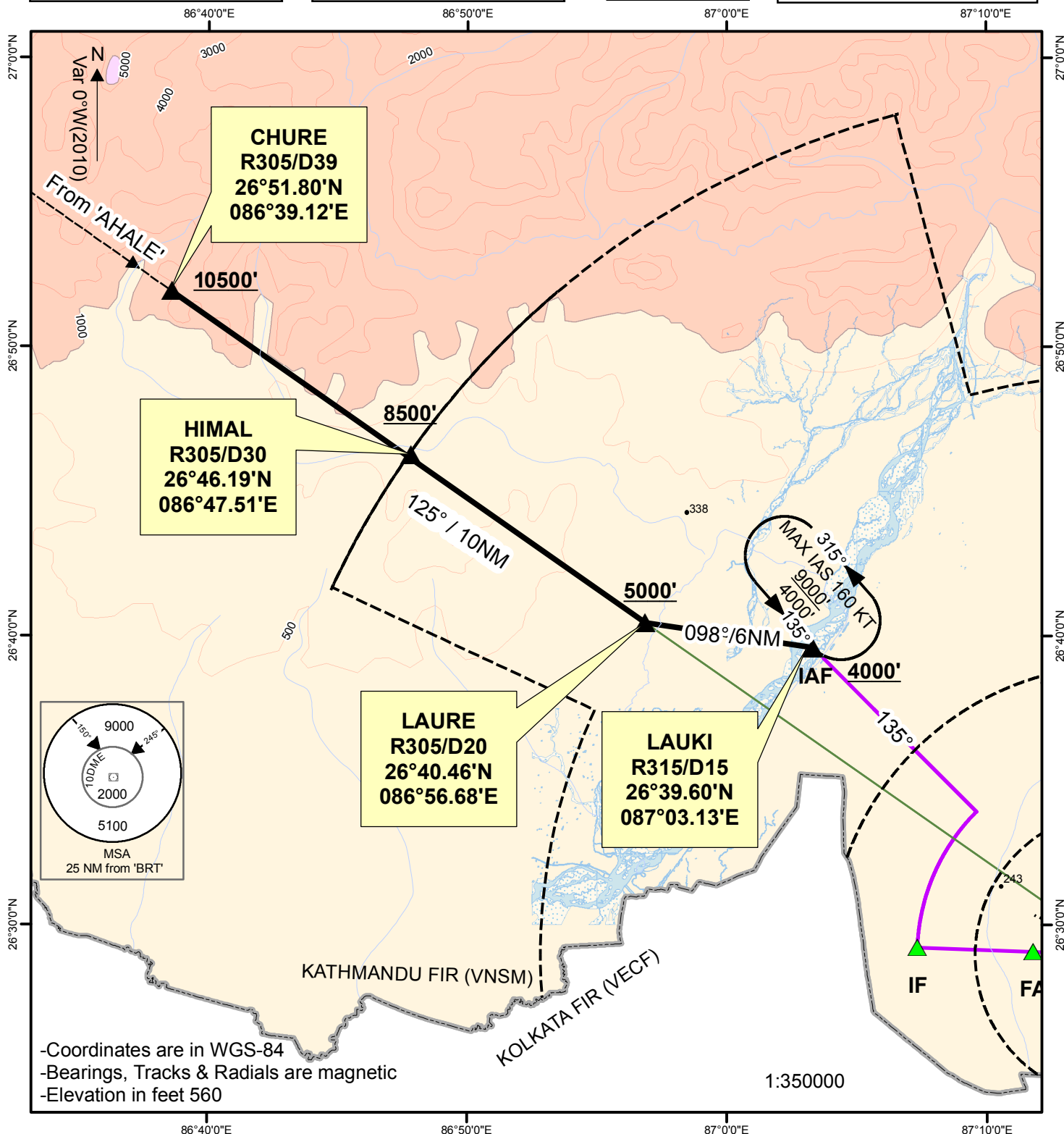


STANDARD TERMINAL
ARRIVAL ROUTE- ICAO
STAR

AERODROME ELEV 236'
TRANS LEVEL: FL150
TRANS ALT: 13500 ft.
Var 0°W (2010)

TWR 123.8

BIRATNAGAR, NEPAL
Biratnagar Airport
CHURE ARRIVAL
VOR 'BRT' 114.1



Routing: From 'CHURE'(R305/D39 'BRT'), track to 'LAURE' (R305/D20 'BRT') via HIMAL then track H098° to 'LAUKI' (R315/D15 'BRT').

Altitude: Maintain A105 or above till 'CHURE', Then descend to 8500' to 'HIMAL'. Reach 'LAURE' at or above 5000' then descend to 4000' to LAUKI