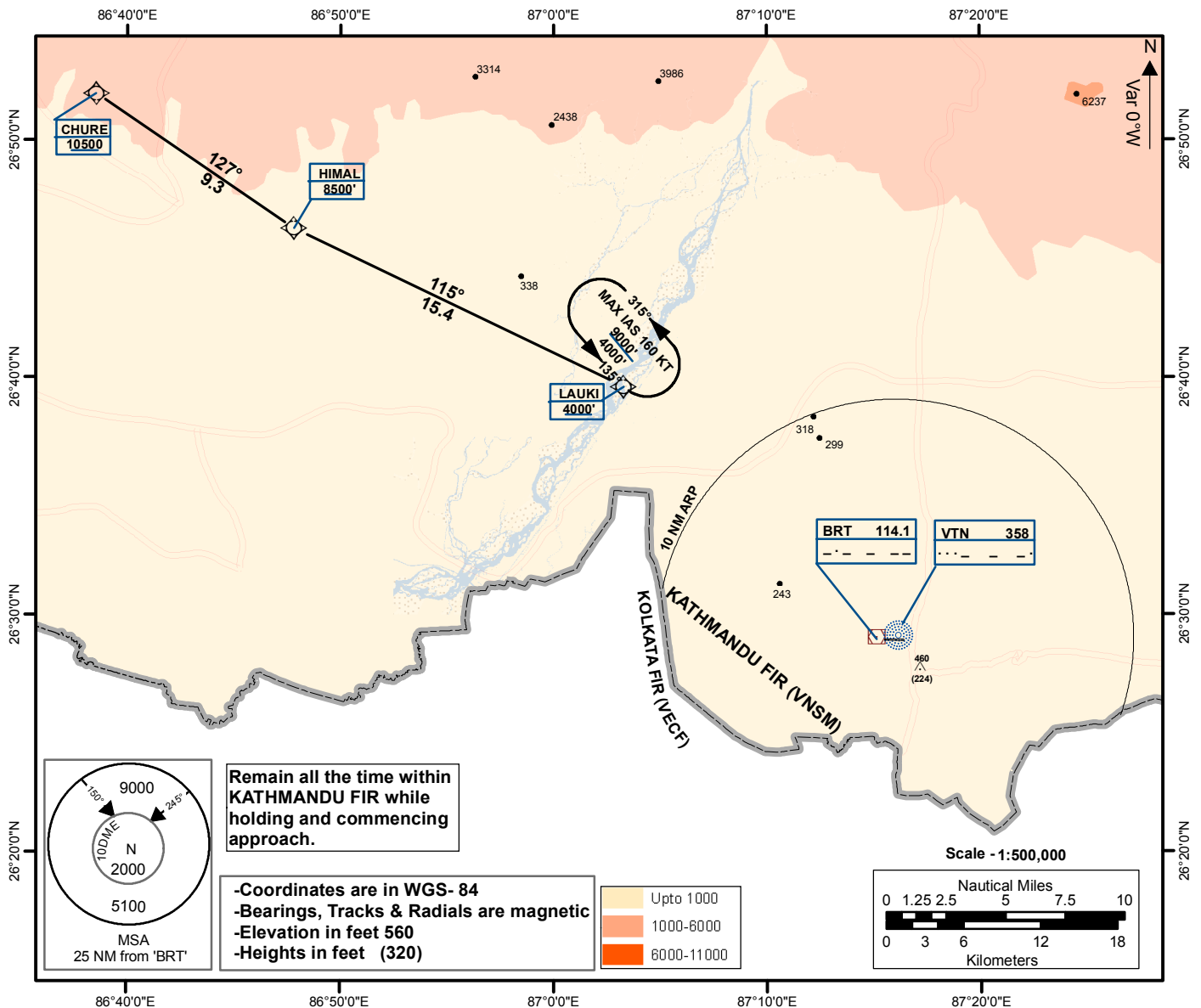


<p><b>STANDARD TERMINAL ARRIVAL CHART - ICAO</b></p>	<p><b>AERODROME ELEV 236' TRANS LEVEL: FL150 TRANS ALT: 13500 ft. Mag Var. 0°W (2010)</b></p>	<p><b>TWR 123.8</b></p>	<p><b>BIRATNAGAR, NEPAL Biratnagar Airport BASIC RNP-1 STAR CHURE 1 ARRIVAL</b></p>
--	---	-------------------------	---



**CHURE 1 ARRIVAL**

FROM CHURE DESCEND HDG 127° TO HIMAL AT OR ABV 8500 FT.  
FROM HIMAL DESCEND HDG 115° TO LAUKI AT OR ABV 4000 FT.